

# Sustainable Procurement Social Value Menu

External Training

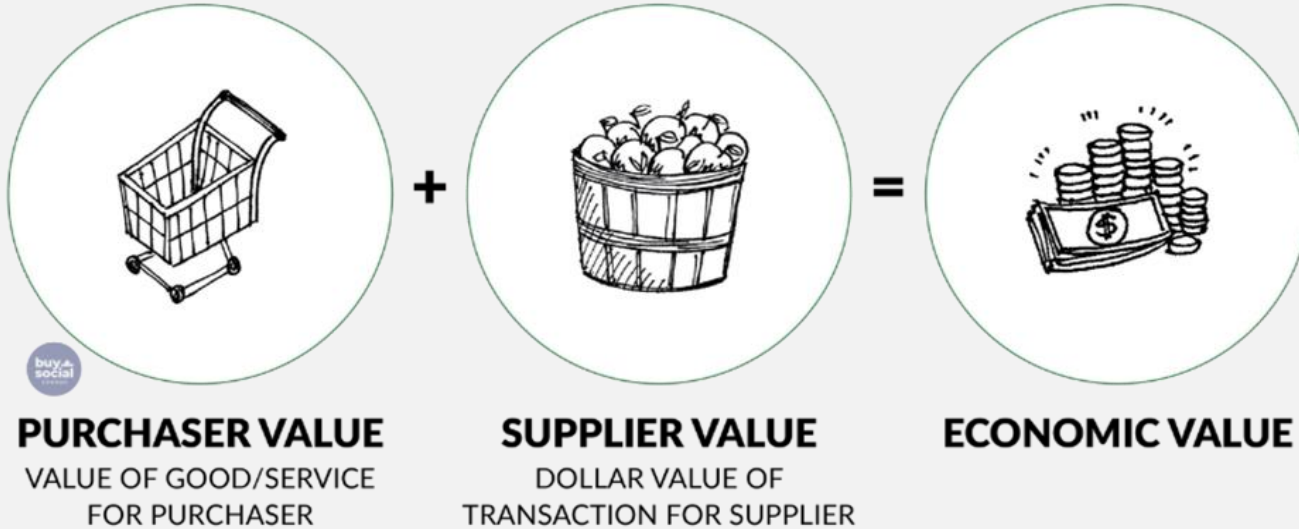
February 28, 2024

# Agenda

- Sustainable Procurement at the City of Winnipeg
- Social Value Clause Pilots
- Supporting Tools
- Tender Document Sample
- Group Discussion

# Sustainable Procurement

# What is Procurement?



# Sustainable Procurement adds environmental, ethical, social and Indigenous value to existing purchasing



# Sustainable Procurement Seeks Best Value

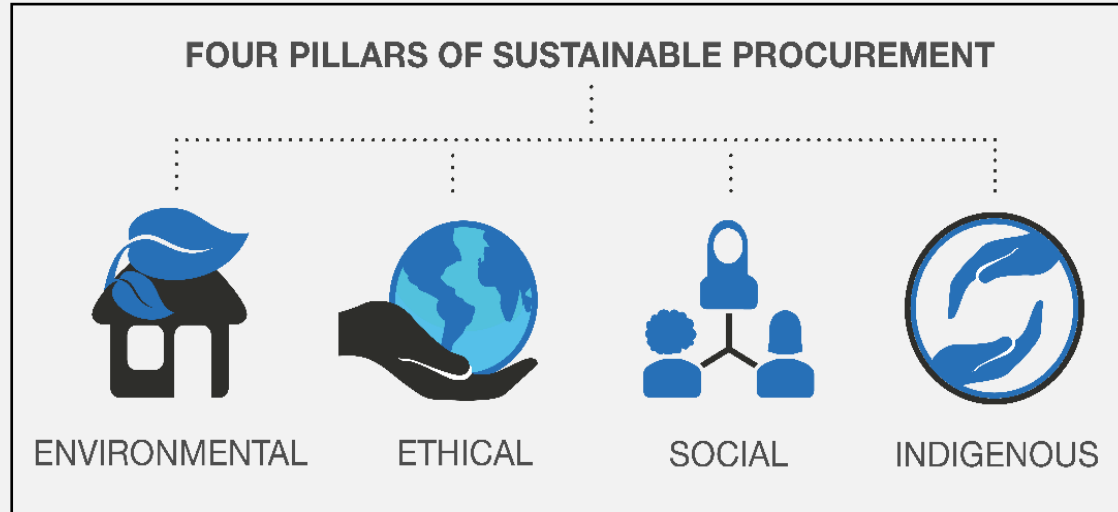
Every purchase has an economic, environmental, ethical, Indigenous and social impact.

When we focus on 'best value for money' procurement is much more than a financial transaction.

Procurement becomes a tool for building healthy communities.

# City of Winnipeg Sustainable Procurement Action Plan

# Sustainable Procurement Action Plan





# Sustainable Procurement Action Plan

## Implementation Plan

- Three-year iterative process that will include:
  - Building sustainable procurement mechanisms
  - Training and piloting sustainable procurement mechanisms
  - On going communication and engagement with stakeholders

# Sustainable Procurement Mechanisms

- Below Threshold Purchases
- Sustainable Procurement Questionnaires
- Community Benefit Agreements
- Social Value Menu

# Sustainable Procurement Mechanisms

## Social Value Menu

- The Social Value Menu contains a list of clauses that can be used in tenders. These clauses are contractual requirements that can drive measurable social, Indigenous and environmental outcomes from the City's procurement.

# Social Value Clause Pilots

- Scheduled to begin March 2024.
- NEWPCC Early Works Tenders
- To support the roll out of the pilots:
  - No accountability requirements beyond reporting
  - Contractors can determine the percentage commitment
  - 1 clause per tender

# Social Value Clauses

## What we heard

- Reporting requirement;
- Clarification on who constitutes employees;
- Inclusion of subcontractors; and
- Social Procurement Plan to be requested after submission deadline.

# Example Social Value Clause

## Clause Language

The Contractor shall commit to providing employment opportunities for Equity Groups. Equity Groups are groups that have historically been denied equal access to employment, education, and other opportunities and includes but is not limited to: Indigenous Peoples, Racialized peoples, newcomers (less than 5 years in Canada); Persons with Disabilities; Women; people facing poverty; Veterans, and 2SLGBTQQIA+ (Two-spirit, Lesbian, Gay, Bisexual, Trans, Queer, Questioning, Intersex, Asexual plus) Peoples.

This commitment is inclusive of subcontractor employment hours and the Contractor will be required to report on their subcontractors employment hours if the subcontractor contract is greater than \$100,000.

**The Contractor shall commit to providing X% of employment hours with Equity Groups on the delivery of this Contract. [Optional for the City to include a minimum threshold]**

$$\text{X\%} = \frac{\text{\# of employment hours by Equity Groups on this Contract}}{\text{Total \# of employment hours on this Contract}}$$

# Example Social Value Clause (cont'd)

## Clause Language (cont'd)

### **SOCIAL PROCURMENT PLAN TEMPLATE**

The Contractor shall provide the Contract Administrator with a Social Procurement Plan Template (Form M: Social Procurement Plan Template) within five (5) Business Days of a request by the Contract Administrator as per B14.X.

### **Social Procurement Plan Questions:**

1. The Contractor commits to \_\_\_\_\_ % of employment hours with Equity Groups on the delivery of this Contract. [Optional for the City to include a minimum threshold]
2. Provide a detailed strategy for how the Contractor's current and planned efforts to employ Equity Groups will ensure the Contractor meets the commitment on the Contract.

# Example Social Value Clause (cont'd)

## Reporting Requirements (Construction Contracts ONLY)

The Contractor shall keep detailed records of the total number of full-time and part-time employees that identify as Equity Groups. The Contractor shall report the total number of employee hours that are delivered by Equity Groups during this Contract.

Employees includes all company employees who are working on this Contract. (Administration, Finance, Project Manager, Safety Officer, Trades, etc.)

**The Contractor shall provide the Contract Administrator a progress report midway through the Contract period and upon completion of the Contract period.**



# Supporting Tools

- Social Procurement Plan Template
- Employee Self-Identification Survey
- Reporting Form

# Tender Document Sample

Share Screen

# Questions?

# Sustainable Procurement Social Value Menu

## External Training